



**\*\*Escape the Chaos, Embrace Serenity: Your Urban Oasis Awaits\*\***

Tired of Bangkok's relentless energy? Step into V20 boutique hotel, a modern sanctuary where tranquility meets convenience, designed to recharge your spirit before diving back into the city's vibrant pulse. Nestled in a secure, leafy neighborhood just moments from three parks, Chatuchak Rodfai and Queen Sirikit Park and the largest transport hub Bangsue Grand Station, our boutique haven places you at the crossroads of adventure and calm—with Donmuang International Airport a swift 15-minute sky train ride away.

**\*\*Unwind in Style, Day or Night\*\***

Start your morning with a refreshing plunge in our infinity pool, or adventure into the past with our Roman style pool, melt stress in the sauna, or invigorate your body in the fitness room. Let the kids loose in our tropical mini zoo where they get to meet the host "William" (the giant sulcata tortoise) or explore the eclectic Thai Airways Flea Market and alley of shops, just steps away. And of course there is the world famous Chatuchak Weekend Market, where you can find almost anything.

**\*\*A Gateway to Wonder\*\***

Our crown jewel? The mesmerizing **\*\*Reef Aquarium\*\***, where vibrant Dispar anthias dart through coral labyrinths—a living masterpiece that transforms **\*The Abyss Woodfired Pizza Restaurant\*** into an underwater

spectacle by evening. Savor artisanal pizzas kissed by flames as exotic fish glide past, turning dinner into an immersive journey.

**\*\*Seamless Support, Beyond Your Stay\*\***

No guidebook needed. Our 24/7 multilingual concierge—available via Line or WhatsApp—is your lifeline in Bangkok, even *\*after\** checkout.

From hidden gems to last-minute tips, we're with you until your final farewell to Thailand.

**\*\*Effortless Connections\*\***

Forget the hustle of transit: enjoy complimentary pickups to/from nearby MRT station (just 3 minutes away), ensuring every adventure begins and ends with ease.

V20 boutique hotel isn't just a stay—it's your peaceful command center for exploring Thailand's wonders. Book now and let the chaos of the city fade into the background, where every return feels like coming home.

***\*Your retreat from the rush, your portal to paradise.\****

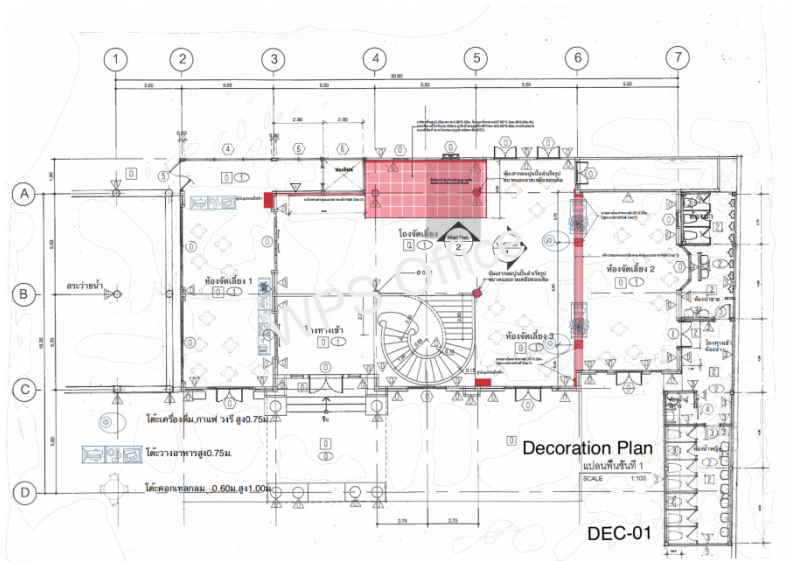


## Mansion

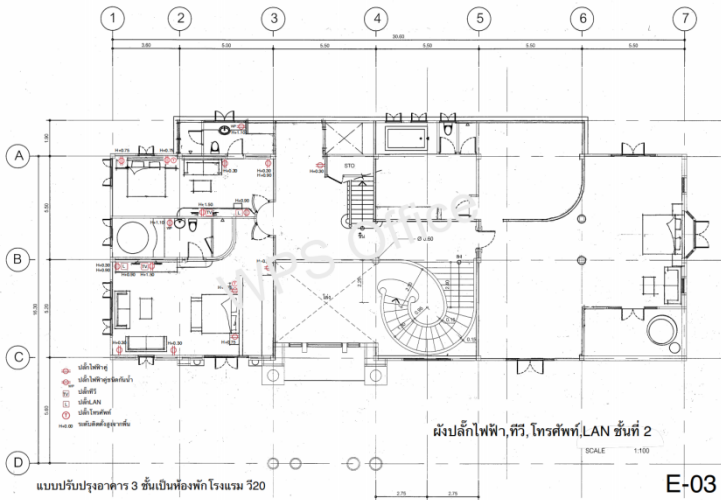




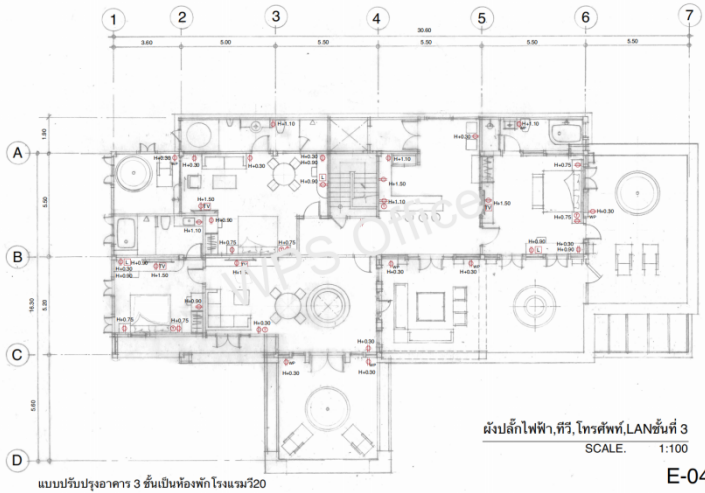
### 1<sup>st</sup> Floor Plan



## 2<sup>nd</sup> Floor Plan

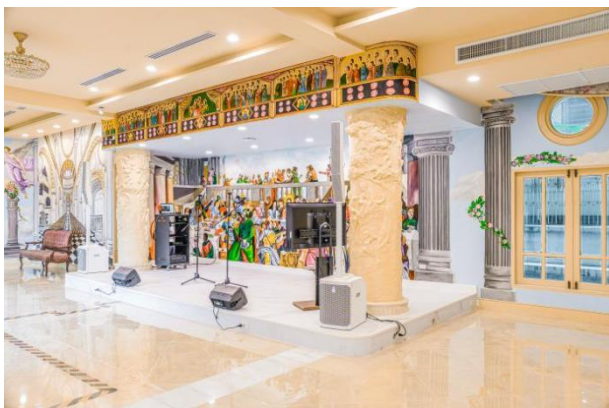


# 3<sup>rd</sup> Floor Plan



## 1<sup>st</sup> Floor





## 2<sup>nd</sup> Floor







### 3<sup>rd</sup> Floor







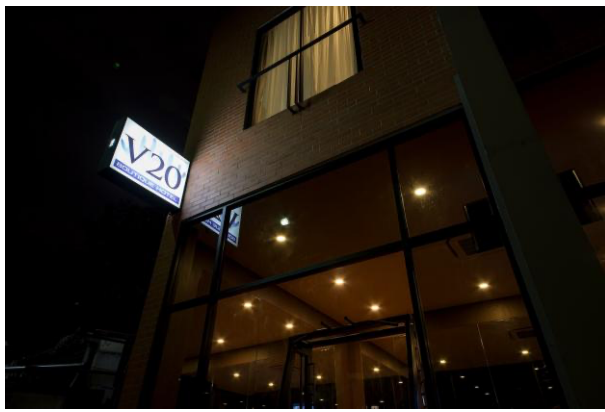


## **Facilities**

### Neo-Gothic Swimming Pool



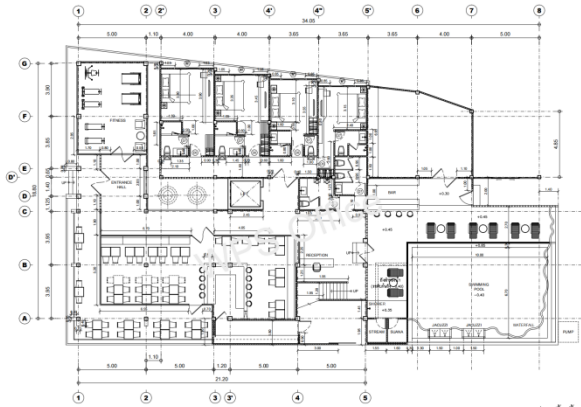
## V20 Boutique Hotel





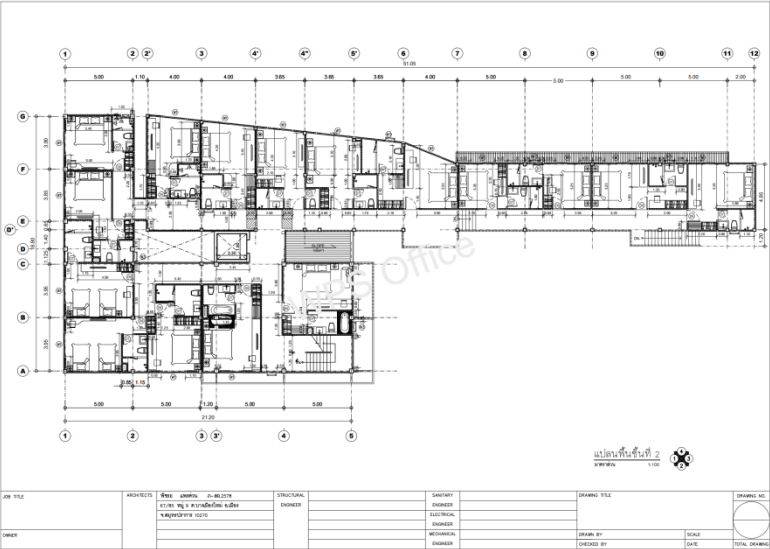


# 1<sup>st</sup> Floor Plan



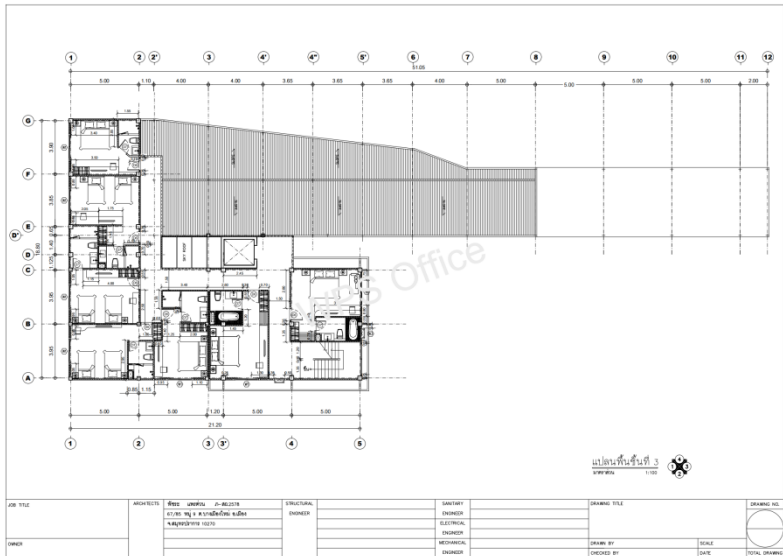
JOB TITLE	ARCHITECT	DR. ANONKUL A. BUDIN อ. อนันต์ อ. บดิน สถาปนิก (ด) 100	STRUCTURAL ENGINEER	SUSANEE ENGINEER	DRAWING TITLE	DRAWING NO.
OWNER				MECHANICAL ENGINEER	DRAWN BY	SCALE
					DESIGNED BY	DATE
						TOTAL DRAWING

2<sup>nd</sup> Floor Plan

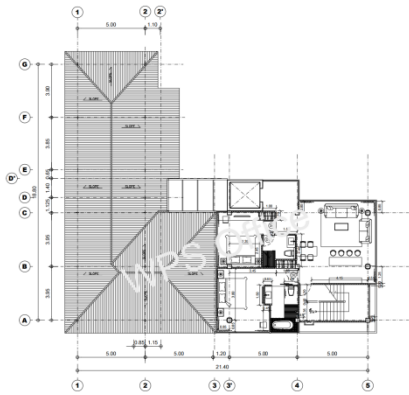


JOB TITLE	ARCHITECTS DR. ANAND K. ARUN K. ANAND K. ARUN K. ANAND K. ARUN	STRUCTURAL ENGINEER		SAFETY ENGINEER		DRAWING TITLE	DRAWING NO.
OWNER				ELECTRICAL ENGINEER		DRAWN BY	SCALE
					CHECKED BY	DATE	TOTAL DRAWING

### 3<sup>rd</sup> Floor Plan



4<sup>th</sup> Floor Plan



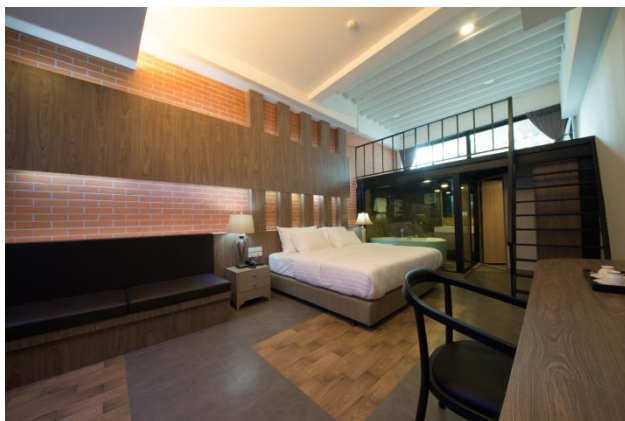
แปลนพื้นที่ชั้นที่ 4  
SWP001 1:100

JOB TITLE	ARCHITECT	PRJ. NO. 001/01 01-001/01	STRUCTURAL	SHEET	DRAWING TITLE	DRAWING NO.
		1/100 1/100 1/100 1/100				
OWNER				ELECTRICAL	DRAWN BY	SCALE
				MECHANICAL		DATE
				ENGINEER	CHECKED BY	TOTAL DRAWING

The figure contains two architectural drawings. The left drawing is a detailed floor plan of a building, showing various rooms, furniture, and structural elements. It includes dimensions and grid lines labeled A, B, C and 1, 2, 3. The right drawing is a structural grid plan, showing a square layout with diagonal bracing. It also includes dimensions and grid lines labeled A, B, C and 1, 2, 3.

## 1<sup>st</sup> Floor

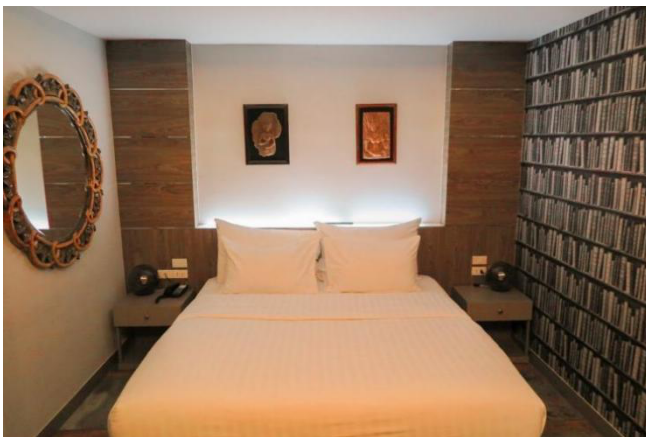


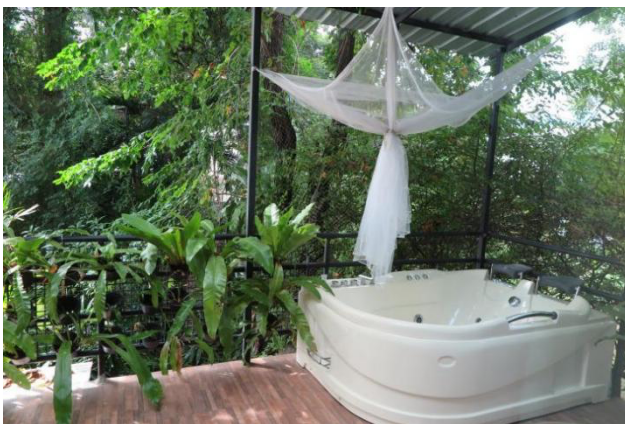


## 2<sup>nd</sup> Floor











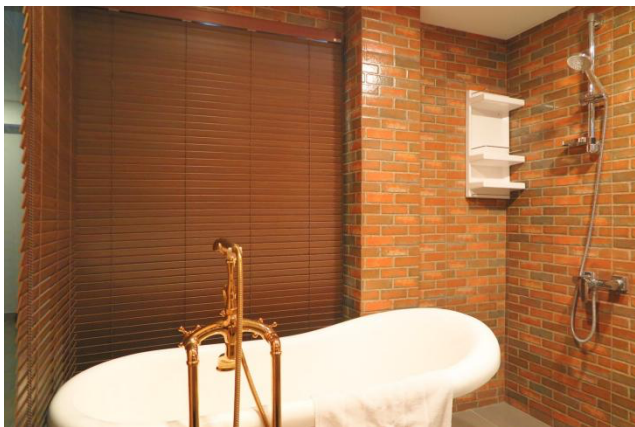
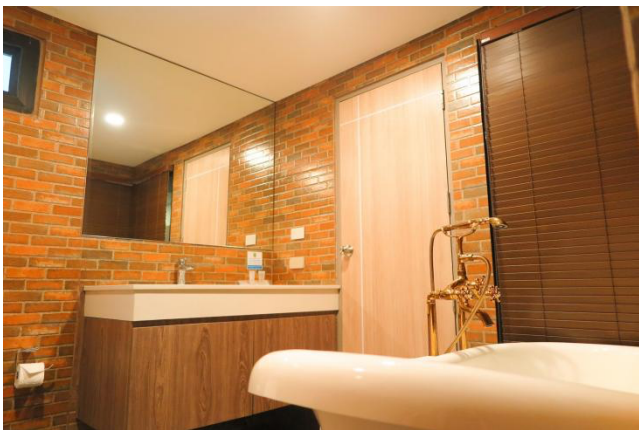




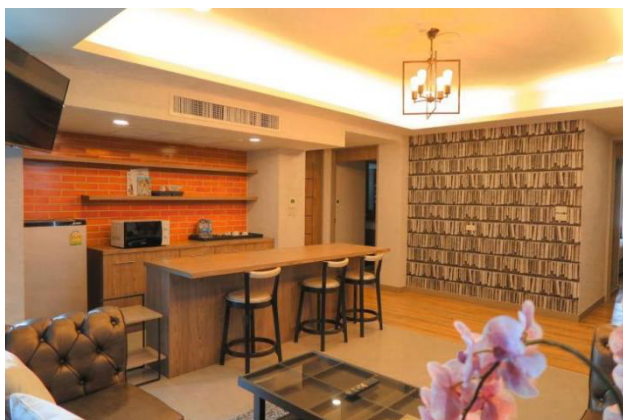
### 3<sup>rd</sup> Floor







## 4<sup>th</sup> Floor









## 5<sup>th</sup> Floor





## **Facilities**

### Swimming Pool



### Sauna and Stream Room



## Art Gallery



## Vending Machines





Massage Chairs



Rabbit Garden



## Laundromat



## Fully Fitted Gym





## International Restaurant



## Nearby Places

### 7-11 Convenience Stores



### Epicurien French Bakery



Thai Restaurant



Thai Airways Flea Market



Mixt Food Court



Central Ladprao



Union Mall



Chatuchak Weekend Market





## Night Market



## New China town (Huai Kwang)



## Public Transportation

### MRT Phahonyothin



### BTS Ha Yaek Ladprao



Krung Thep Apiwat Central Terminal Station



Don Mueng Airport (DMK)





## Parks

Chatuchak Park



Rodfai Park



## Queen Sirikit Park

